

### CERTIFICATE OF LOCATION OF GOVERNMENT CORNER

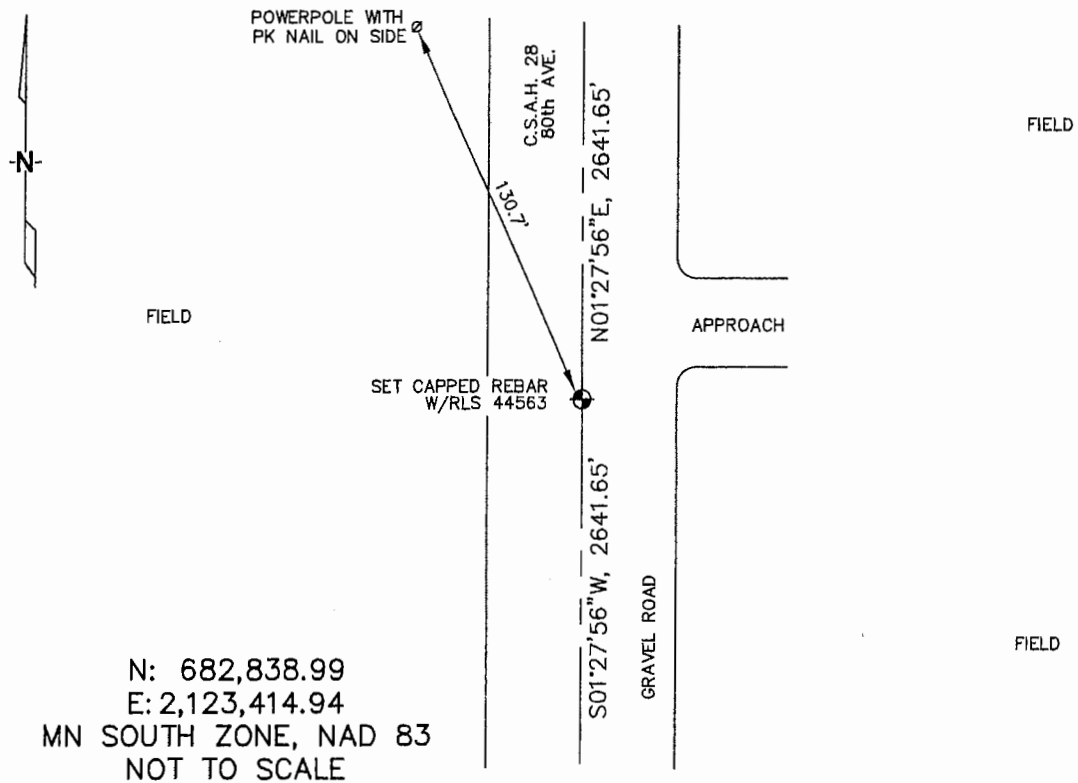
EAST 1/4 Corner of Section 29, Township 106N, Range 42W, 5TH P.M.

STATE OF MINNESOTA, County of MURRAY

At the corner location shown on the sketch :

- On \_\_\_\_\_ found \_\_\_\_\_
- left monument as found,  lowered monument,  removed monument (explain)
- On 3/21/2006 set A 5/8" REBAR WITH CAP: RLS 44563.

Sketch of reference ties



Statement of evidence relative to this corner location is on back page

I hereby certify that this document and the data contained herein was prepared by me or under my direct supervision.

Thomas J. Zopf \_\_\_\_\_ Date 5/18/06  
 Thomas J. Zopf  
 Registration No. 44563

- Land Surveyor,  Professional Engineer
- County Surveyor,  County Engineer

OFFICE OF THE COUNTY RECORDER

County of \_\_\_\_\_

**SEP 28 2006**

I hereby certify that this document was filed in the Co. Recorders office at \_\_\_\_\_ M. on the day of \_\_\_\_\_ A.D., 20

County Recorder James V. Johnson  
 By \_\_\_\_\_, Deputy

DOCUMENT NO. \_\_\_\_\_

STATEMENT OF EVIDENCE:

EAST 1/4 CORNER, SECTION 29, T. 106 N., R. 42 W.,  
MURRAY COUNTY, MINNESOTA

- 1866 J.W. Bishop, US. Deputy Surveyor, monumented corner.
- 6/04/1977 Murray Co. found stone.  
Ties: SE-39.9' to tack in brace post;  
E-35.8' to tack in corner of fence post, on line.
- 3/21/2006 Ulteig Engineers, Inc., Survey Crew, Dennis Lavallie Party Chief,  
found nothing. Set a 5/8" rebar with cap: RLS 44563 in the  
gravel road.  
Ties: NW-130.7' to PK nail in power pole;  
N-2641.65' to NE corner, Section 29;  
S-2641.65' to SE corner, Section 29.